

# SL5

SL5 is a padlock type seal made of high quality Styrene Acrylonitrile (SAN) with gloss surface stainless steel hasp. SL-5 is a better product to provide tamper evident as once the plastic is plied open, it cracks and is considered irreplaceable.

Material

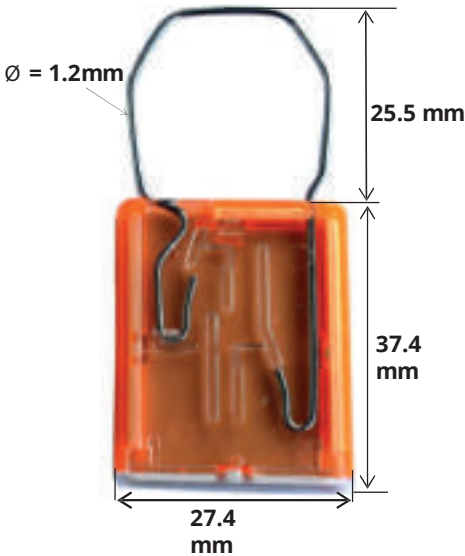
- Body – Styrene Acrylonitrile
- Hasp – Stainless Steel

Marking

- Laser marking
- Customize name
- Sequential numbering
- Laser barcoding

Applications

- Retails / Distribution
- Banking
- Cash in transit
- In-land shipment



Product Code	Packaging		
	Quantity per box (pieces)	Weight per box (kg)	Box Dimension, L x W x H (mm)
SL5	1000	6.8	452 X 290 X 175